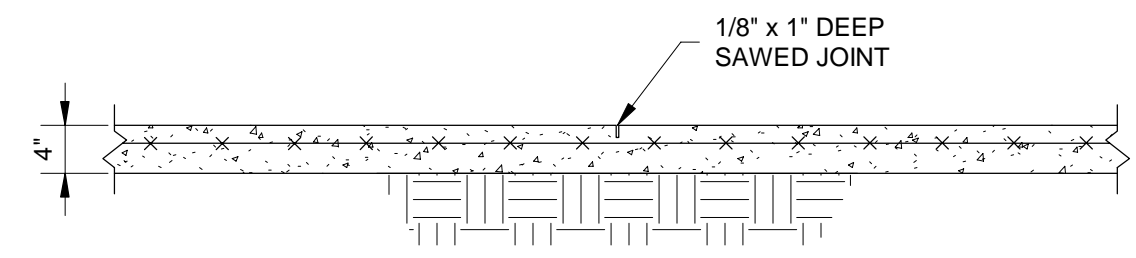


**NOTES:**  
1. INSTALL CONTROL OR CONSTRUCTION JOINTS IN SLAB AS SHOWN ON PLAN OR AT LOCATIONS APPROVED BY ARCHITECT.

**TYPICAL CONSTRUCTION JOINT DETAIL**

3/4" = 1'-0"



**TYPICAL CONTROL JOINT DETAIL**

3/4" = 1'-0"

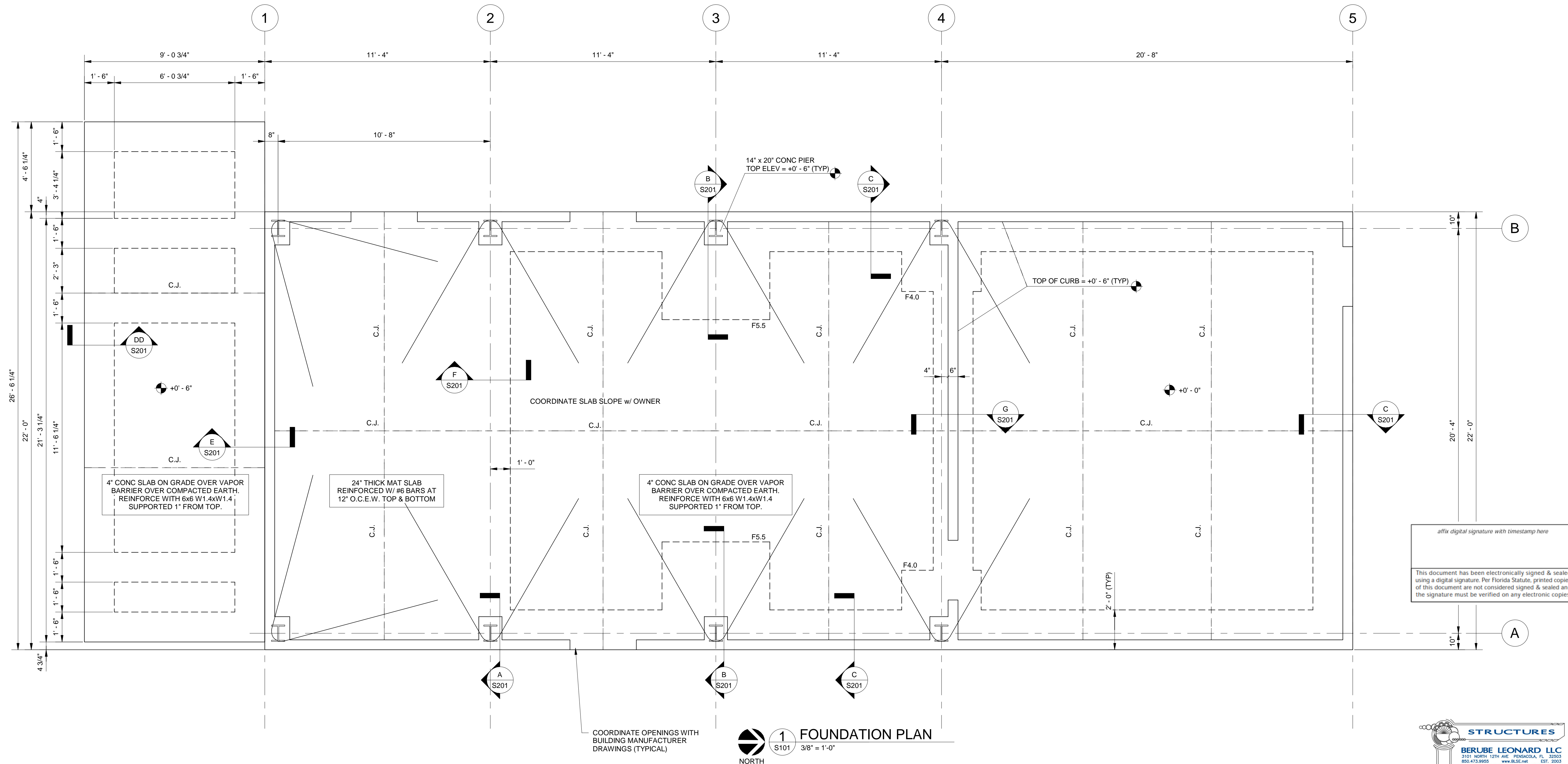
SPREAD FOOTING SCHEDULE		
MARK	SIZE (LENGTH x WIDTH x DEPTH)	FOOTING REINFORCEMENT
F4.0	4'-0" x 4'-0" x 2'-0"	5 - #6 BOTTOM BARS E.W.
F5.5	5'-6" x 5'-6" x 2'-0"	7 - #6 BOTTOM BARS E.W.

COLUMN DESCRIPTION	LRFD LOAD COMBINATIONS		
	VERTICAL	HORIZONTAL	UPLIFT
A-1, A-2	11 KIPS	87 KIPS	46 KIPS
B-1, B-2	6 KIPS	87 KIPS	8 KIPS
A-3, B-3	5 KIPS	64 KIPS	7 KIPS
A-4, B-4	3 KIPS	32 KIPS	4 KIPS

**GENERAL STRUCTURAL NOTES:**

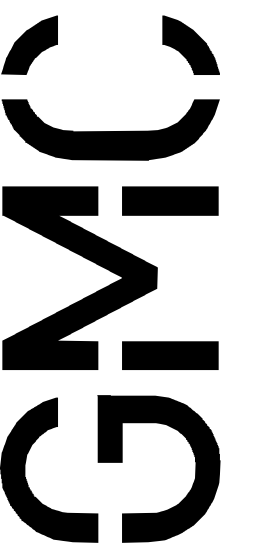
- BERUBE LEONARD, LLC IS ACTING AS A SPECIALTY ENGINEER FOR THE FOUNDATION ONLY AND IS NOT THE STRUCTURAL ENGINEER OF RECORD FOR THIS PROJECT. FOUNDATION HAS BEEN DESIGNED FOR REACTIONS PROVIDED BY BUILDING MANUFACTURER AS SHOWN ON THESE DRAWINGS.
- MATERIALS TO CONFORM TO THE FOLLOWING:
 

CONCRETE REINFORCING STEEL WELDED WIRE FABRIC MISC STR STEEL ANCHOR BOLTS	3,000 PSI AT 28 DAYS ASTM A615 GRADE 60 ASTM A185 (FLAT SHEETS) ASTM A36 ASTM A307 OR F1554, GR 36 MINIMUM
---	--
- PREPARE SOIL BENEATH BUILDING IN ACCORDANCE WITH RECOMMENDATIONS CONTAINED IN PROJECT GEOTECHNICAL REPORT #GPEN190001 DATED DECEMBER 13, 2109 PREPARED BY GOODWYN MILLS CAWOOD (205.879.4462). COMPACT EXISTING SOIL AND FILL BENEATH BUILDING TO 95% MODIFIED PROCTOR PER GEOTECHNICAL REPORT. DESIGN SOIL BEARING PRESSURE = 2000 PSF.
- ALL ELEVATIONS REFERENCED ON THE STRUCTURAL DRAWINGS ARE ABOVE OR BELOW A FINISHED FLOOR ELEVATION OF +0'-0". SEE CIVIL SITE GRADING PLAN FOR THE ACTUAL ELEVATION.
- PLACE REINFORCING IN CONCRETE IN ACCORDANCE WITH ACI 315 WITH A MINIMUM OF 3" CLEAR COVER WHEN CAST AGAINST AND PERMANENTLY EXPOSED TO EARTH. PROVIDE CORNER BARS FOR ALL CONTINUOUS HORIZONTAL REINFORCING.



**FOUNDATION PLAN**  
1 S101 3/8" = 1'-0"  
NORTH

affix digital signature with timestamp here  
This document has been electronically signed & sealed using a digital signature. Per Florida Statute, printed copies of this document are not considered signed & sealed and the signature must be verified on any electronic copies.



720 Bayfront Parkway, Suite 200  
Pensacola, FL 32502  
T 850.432.0706  
F 850.433.0508  
GMCNETWORK.COM  
COA-AA26000557

ISSUE	DATE
	5-21-2020

**FOUNDATION PLAN**

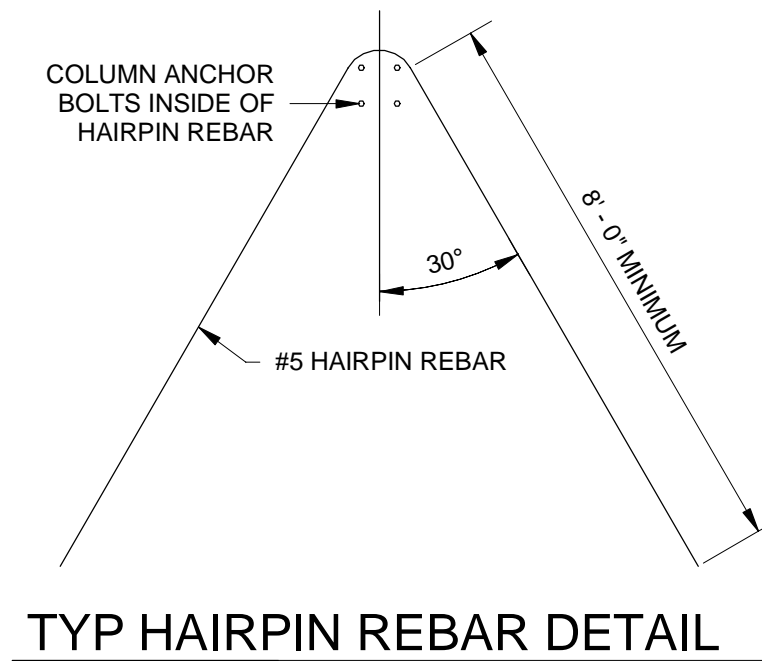
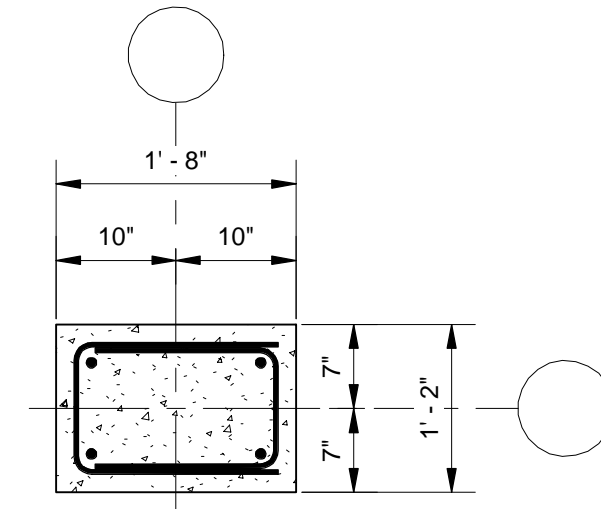
**WALTON FIRE TOWER**  
NORTHWEST FLORIDA STATE COLLEGE  
DEFUNIAK SPRINGS, FL

NATHAN BERUBE  
FL PE #55850

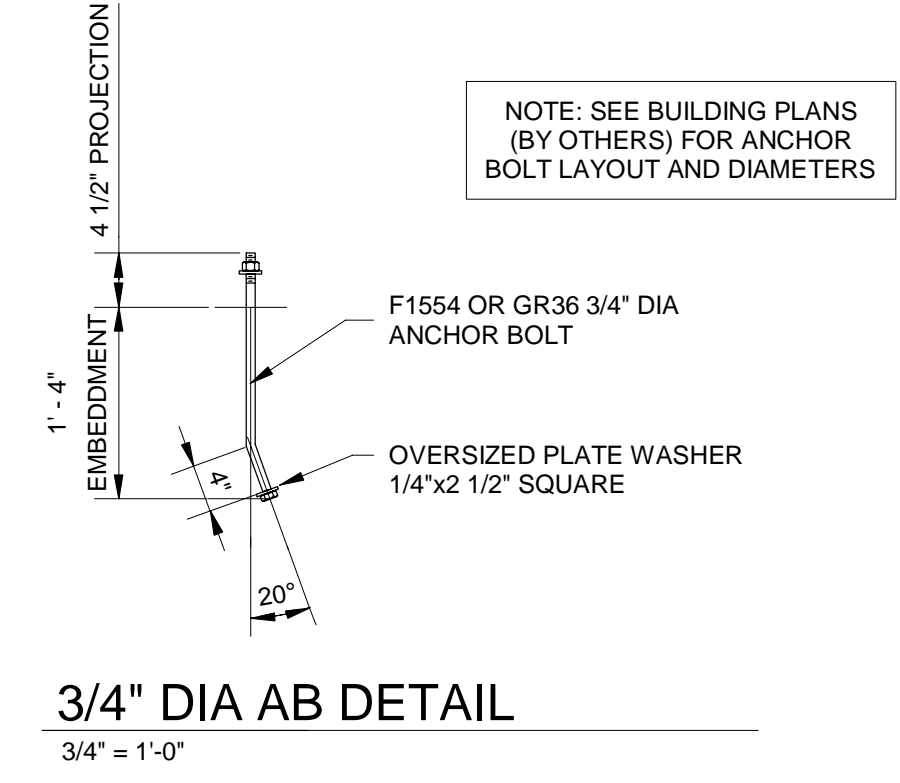
GMC # APEN200012

**FOUNDATION PLAN**

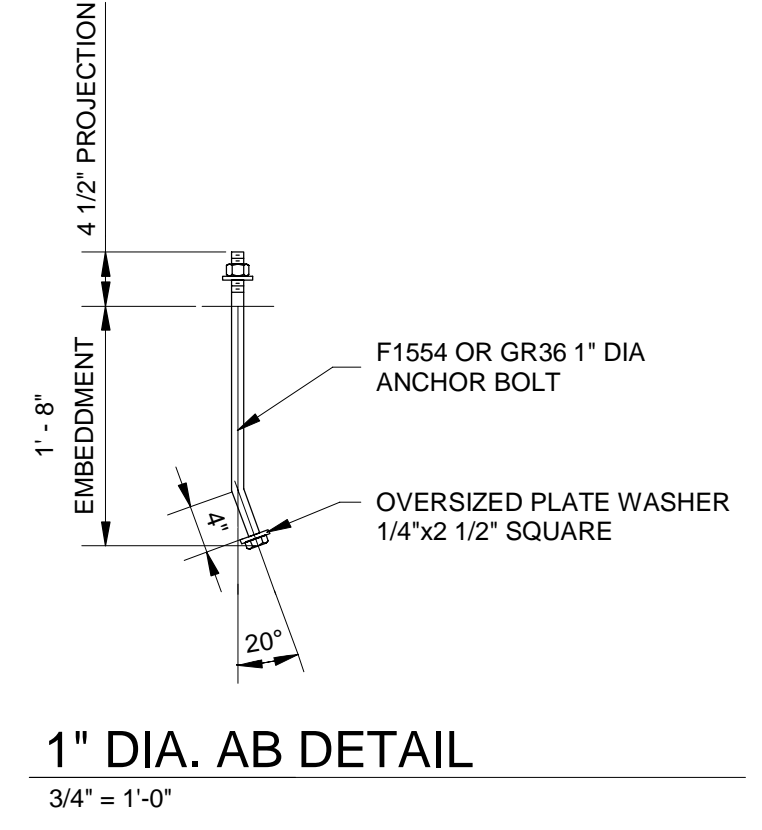
**S101**



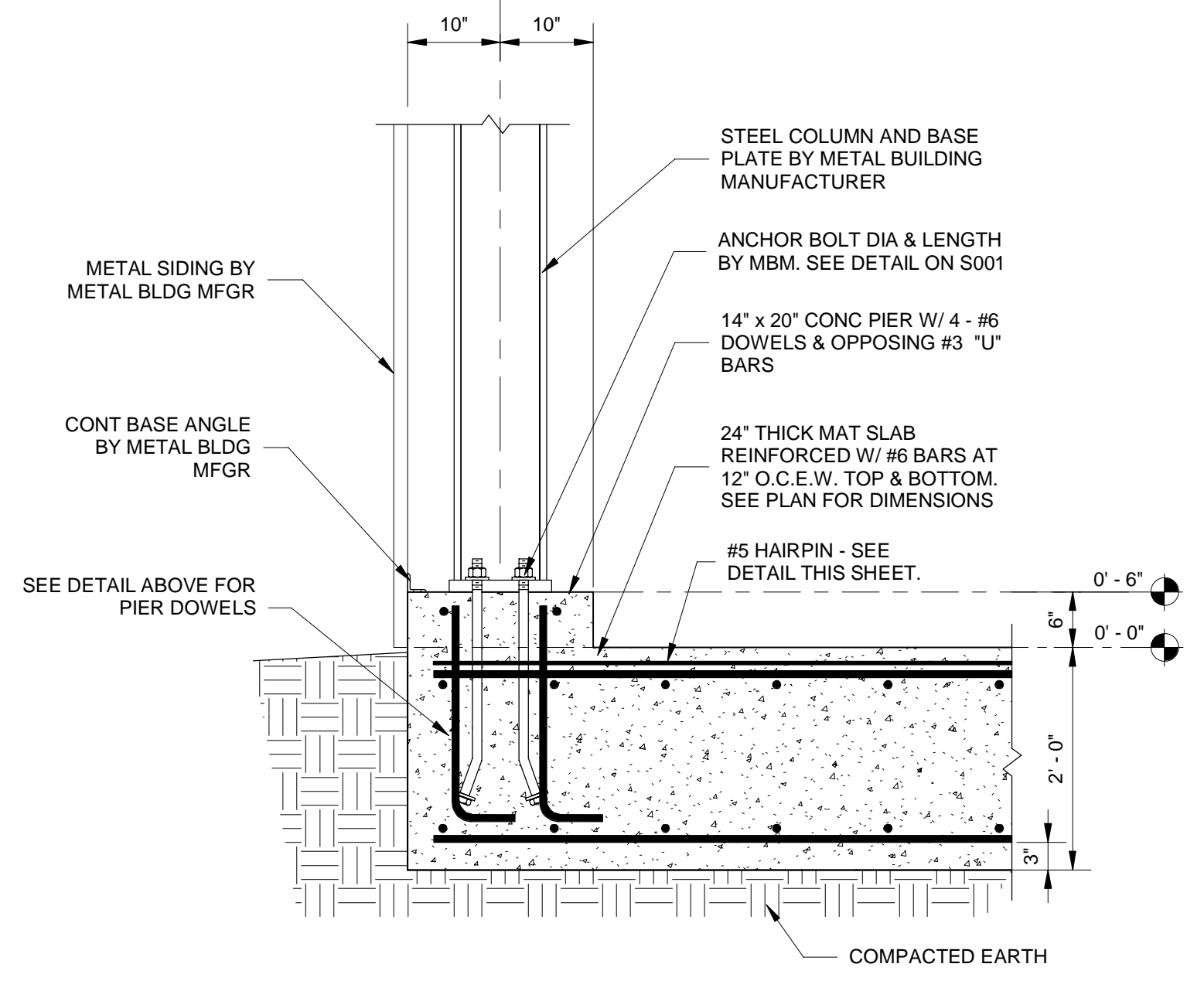
TYP HAIRPIN REBAR DETAIL  
3/8" = 1'-0"



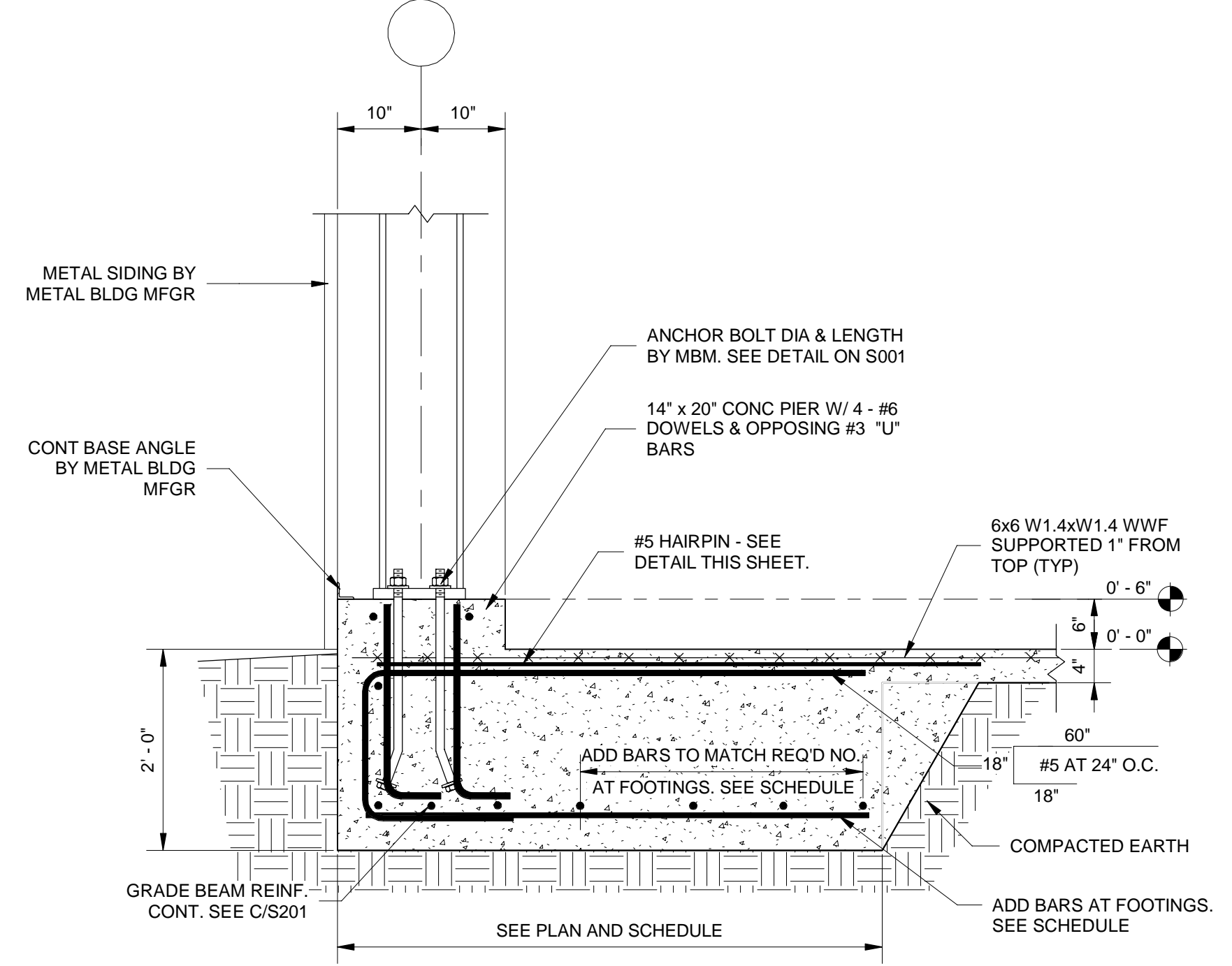
3/4" DIA AB DETAIL  
3/4" = 1'-0"



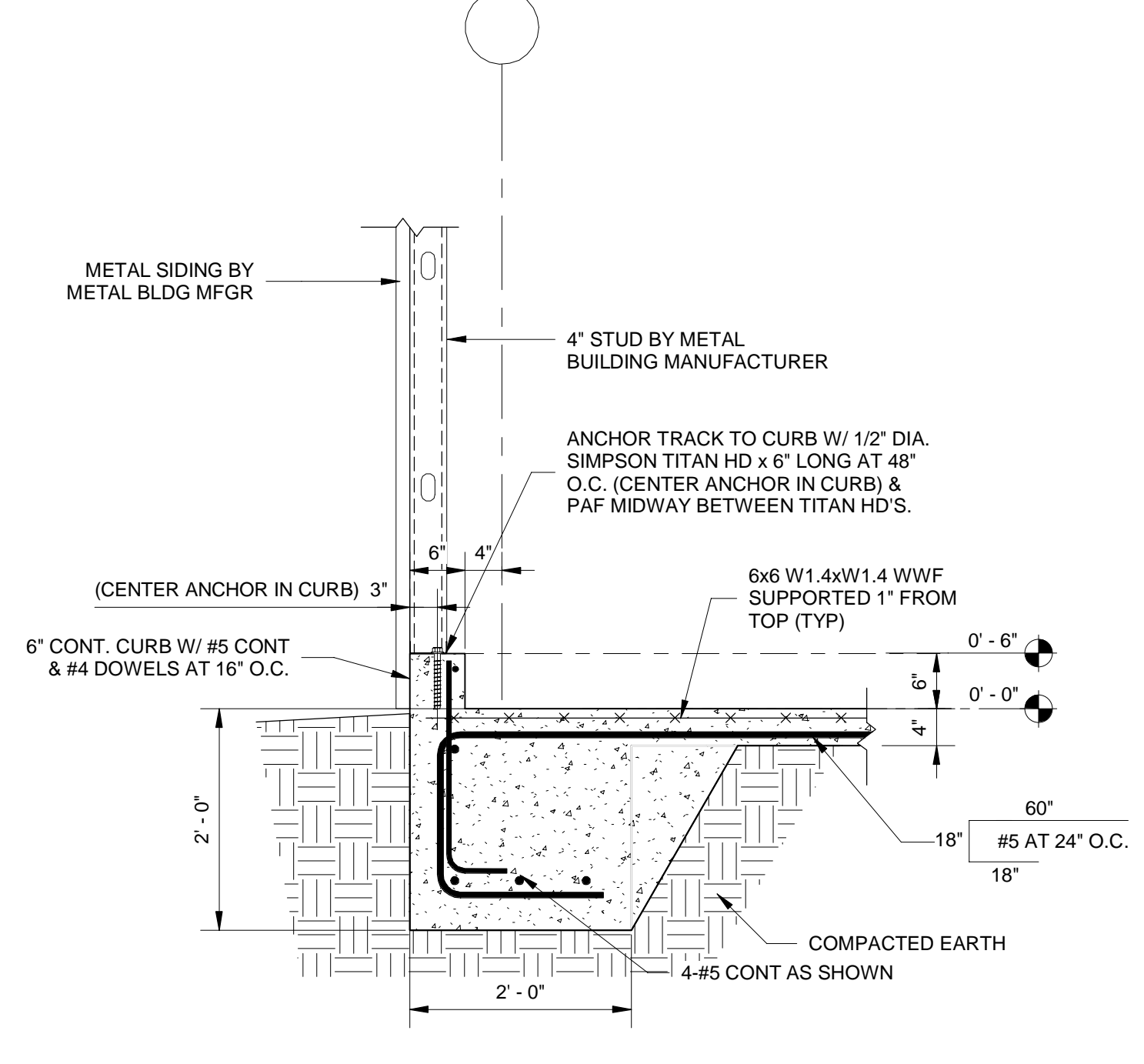
1" DIA. AB DETAIL  
3/4" = 1'-0"



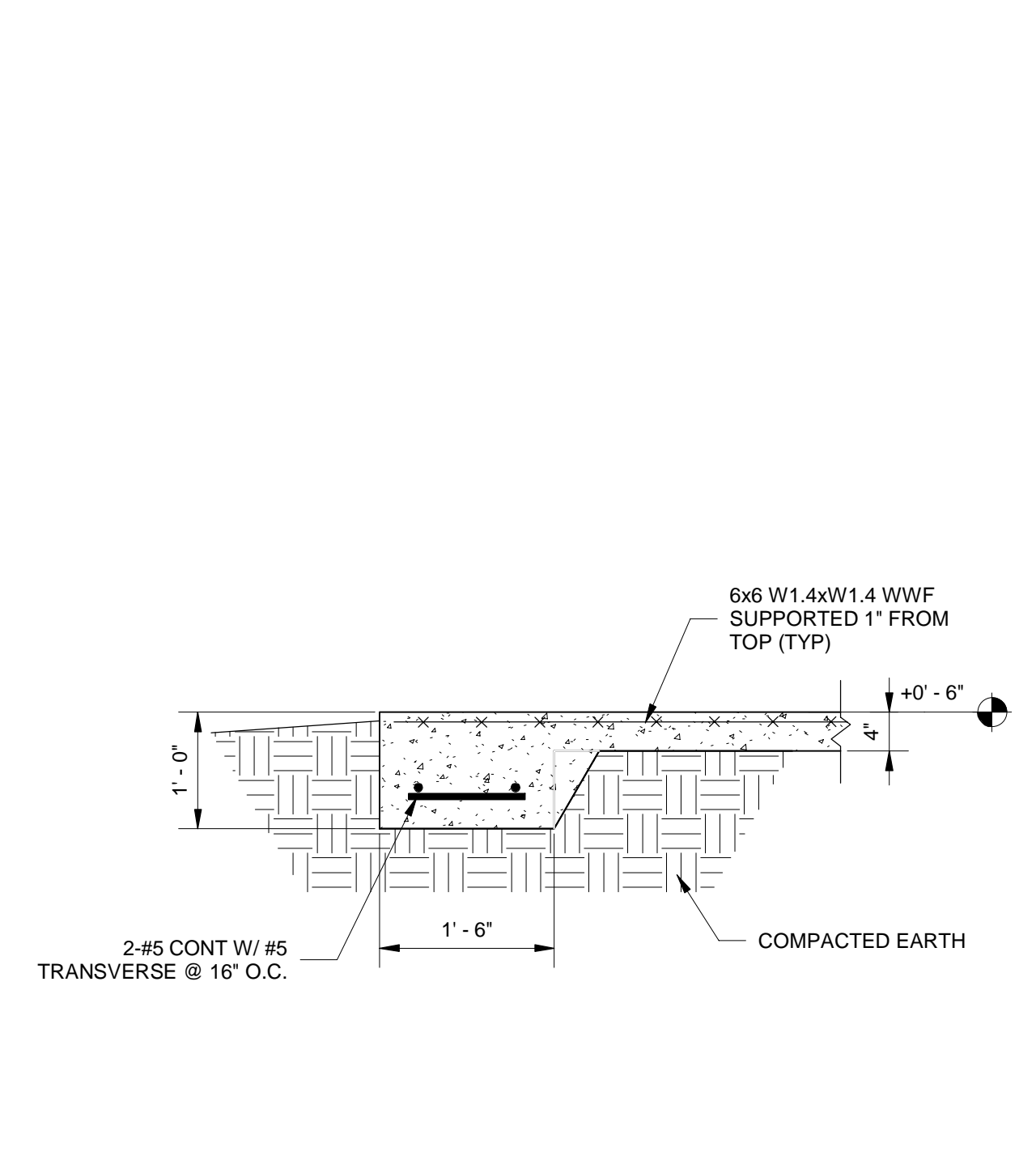
A SECTION  
S201 3/4" = 1'-0"



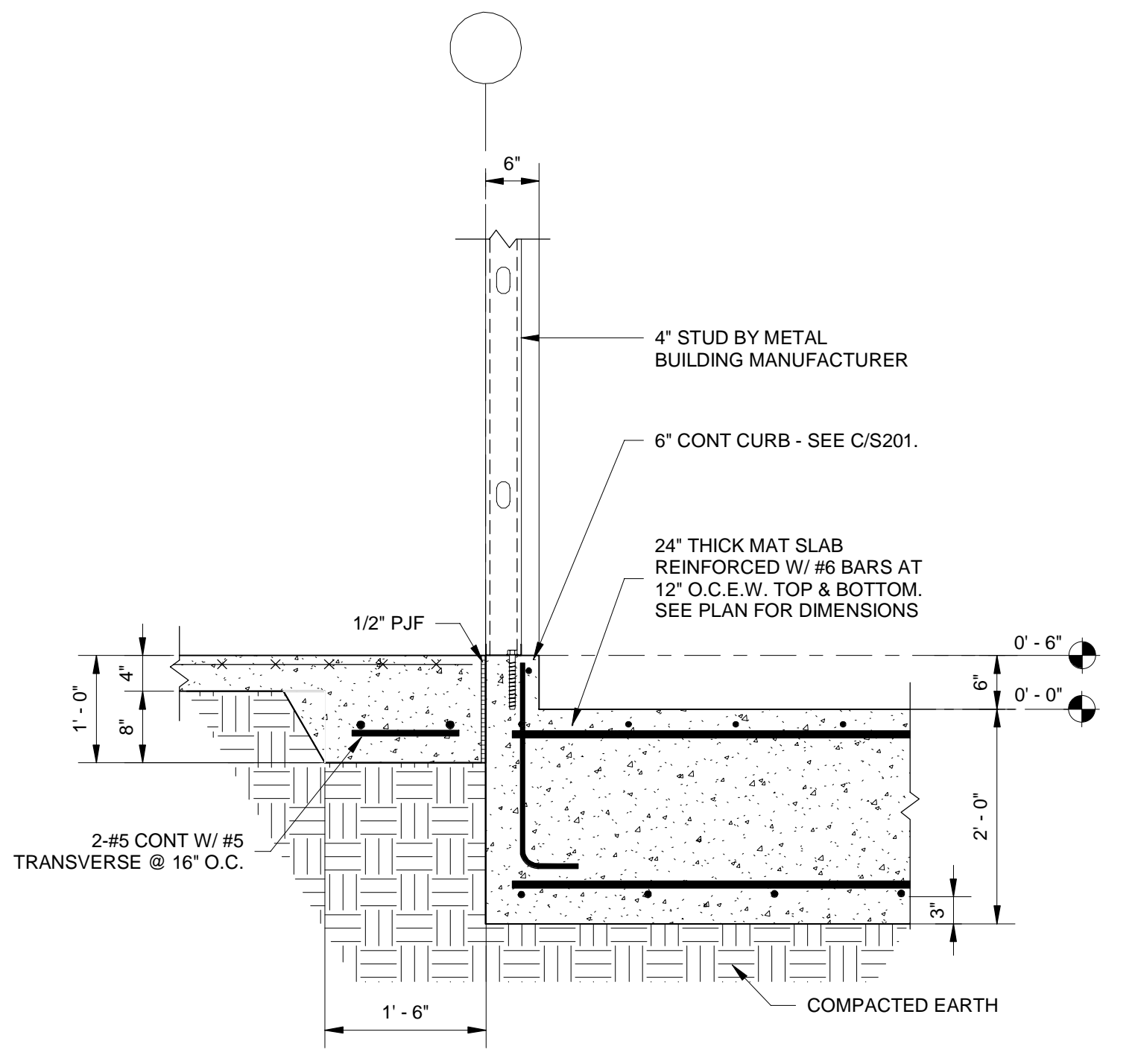
B SECTION  
S201 3/4" = 1'-0"



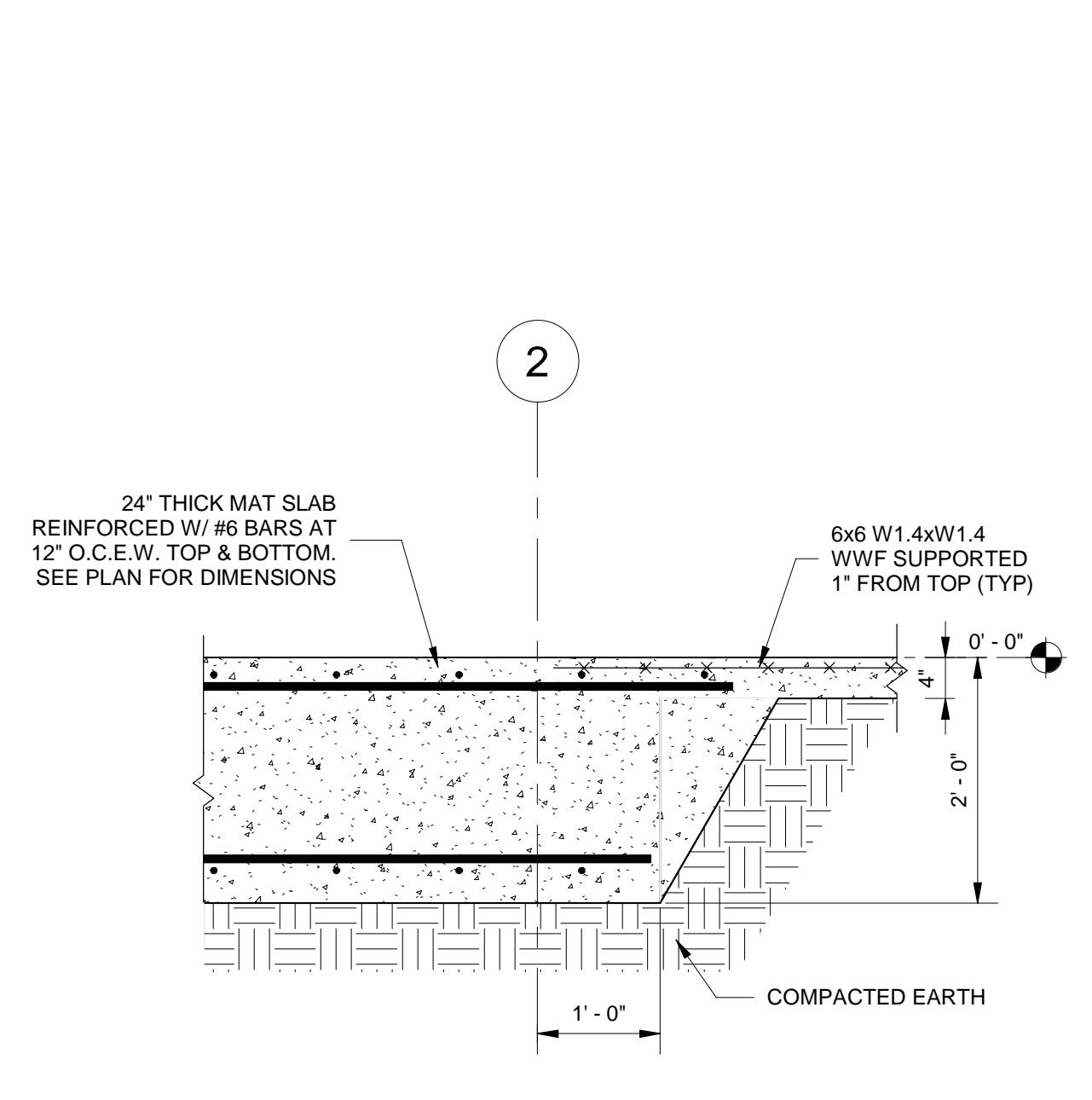
C SECTION  
S201 3/4" = 1'-0"



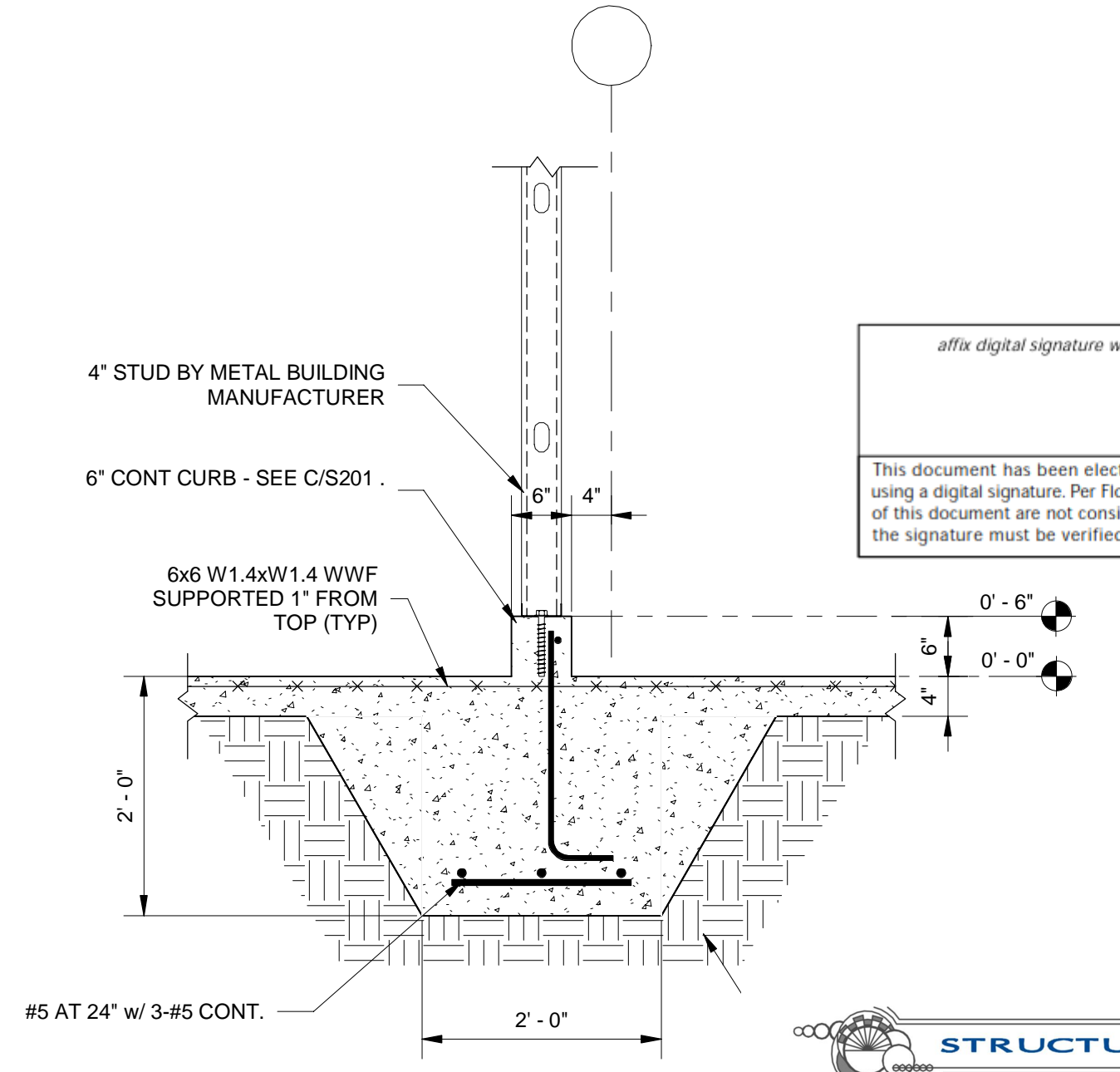
DD SECTION  
S201 3/4" = 1'-0"



E SECTION  
S201 3/4" = 1'-0"



F SECTION  
S201 3/4" = 1'-0"



G SECTION  
S201 3/4" = 1'-0"

# GMC

720 Bayfront Parkway, Suite 200  
Pensacola, FL 32502  
T 850.432.0706  
F 850.433.0508  
GMCNETWORK.COM  
COA-AA26000557

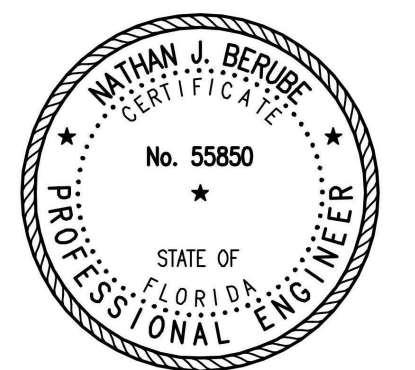
ISSUE	DATE
	5-21-2020

WALTON FIRE TOWER

NORTHWEST FLORIDA STATE COLLEGE  
DEFUNIAK SPRINGS, FL

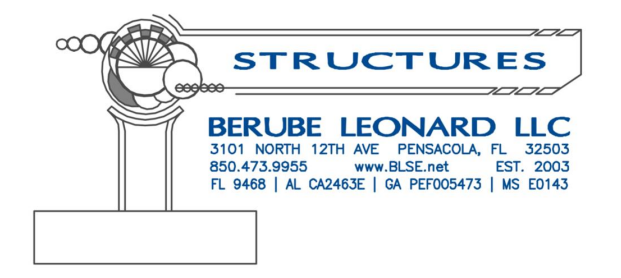
GMC # APEN200012

NATHAN BERUBE  
FL PE #55850



*affix digital signature with timestamp here*

This document has been electronically signed & sealed using a digital signature. Per Florida Statute, printed copies of this document are not considered signed & sealed and the signature must be verified on any electronic copies.



SECTIONS AND DETAILS

# S201